

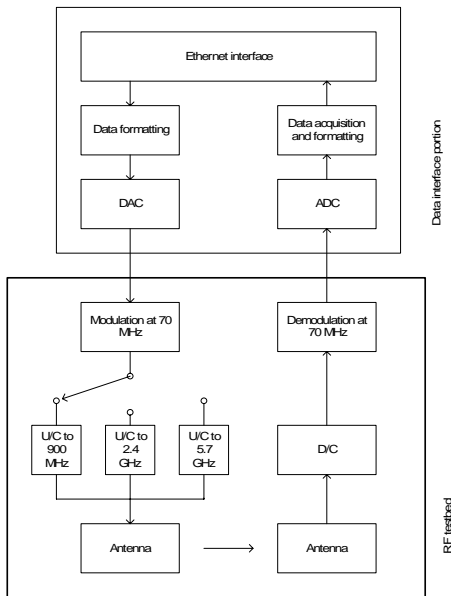
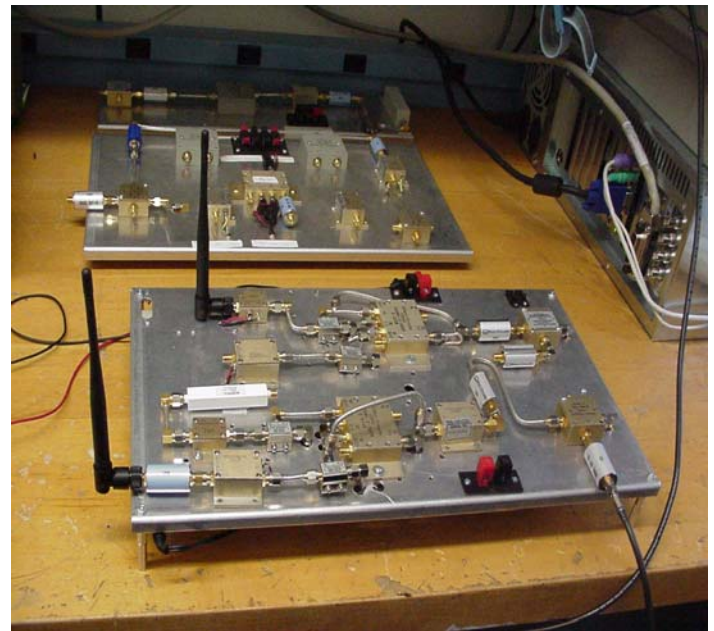
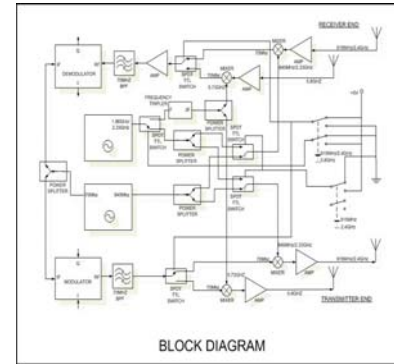
# STB: Stevens' Tri-Band - A Tri-Band RF Front End Development

## Project and research objectives

- Development of a multi-band wireless test bed
- Exploration of ISM band
- Development of dynamic spectrum access systems

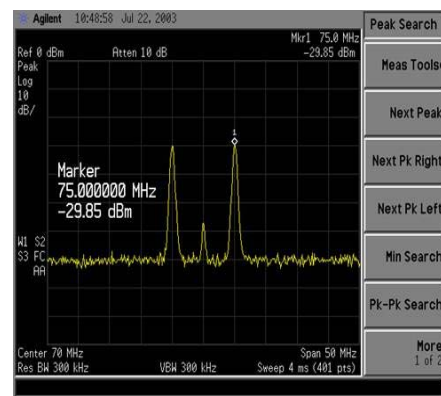
## STB features

- Operate in three ISM bands (900 MHz, 2.4 GHz, 5.7 GHz)
- Convenient to perform testing at every frequency stage
- Low MDS (minimum detectable signal) (e.g., -62 dBm)
- Better LO stability (e.g., +/- 1 ppm, +/- 2.5 ppm)
- Band switch through microcontroller



**Research team:** Terrance Bernard, Amitoj Singh, Jeremiah Ventry-McGee (Undergraduate scholar summer research, 2003, 2005); Angelo Campos-Giraldo, Audrey Criss, Oscar Garces, Kwesi Kerr (Senior design, 2004-2005); Nishant Kumar, Mubashir Syed, Kuntal Shah (Graduate RA); Prof. Yu-Dong Yao.

**Contact (for information and demonstration):**  
Prof. Yu-Dong Yao; yyao@stevens.edu; (201) 216-5264



## Sponsors

- Stevens' Scholar Program (Summer 2003)
- WiNSeC
- NSF NRT Program (2003 – 2004)
- NSF NETS Program (2004 – 2005)

